



1050 series

CATCHPIT-SILT TRAP



MODEL
AICCP1050



DRAINNOVATION
INNOVATIVE PRODUCTS FOR DRAINAGE

PDS/AICCP1050/9/20 REV3





MODEL AICCP1050

Description

1050mm diameter Inspection Chamber - Catchpit. For catchment and trapping of silt and solids in surface water drainage systems. Supplied as a pre-assembled, single piece unit, ready to install.

Features & Benefits:

- Available as a single piece chambers for depths up to 3000mm
- Manufactured to site specification
- Pipework options - 110/160mm EN1401 and 150mm to 450mm twinwall
- 500mm sump depth, offers 430 litres of silt and solids catchment
- Easy to install. No assembly or wet trades required
- Huge savings on overall installation cost versus traditional build
- Features our New Profiled Heavy Duty Base
- Robust Twinwall Chamber
- Granular backfill
- Chemical Resistant
- Manufactured in the UK

Application:

- Design & Construction Guidance - April 2020. Section C7.1.1 - Sediment management ; states that an effective means of sediment control should be provided within the drainage system and particularly upstream of any attenuation component (e.g., pond, wetland, basin or tank), infiltration component, filtration component or outfall.
- Maximum installation depth : Adoptable - 2000mm to soffit of pipe and Non- Adoptable - 3000mm Total Depth

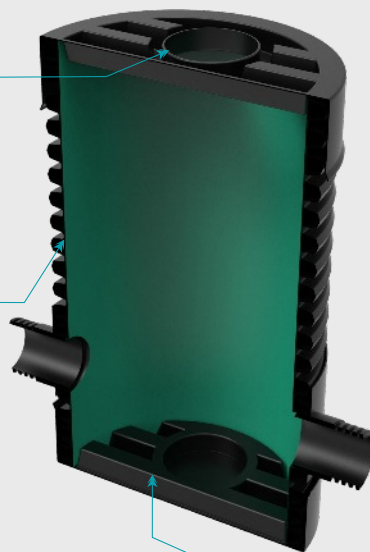
Compliance:

- EN13598 Part - 2 (2009)
- New Design & Construction Guidance - Section C7.1.1 Sediment Management
- Sewers for Adoption (SfA7) 7th edition
- Suitable for Adoptable and Non-Adoptable applications
- Building Regulations - Part H1

Restriction Cap - Optional



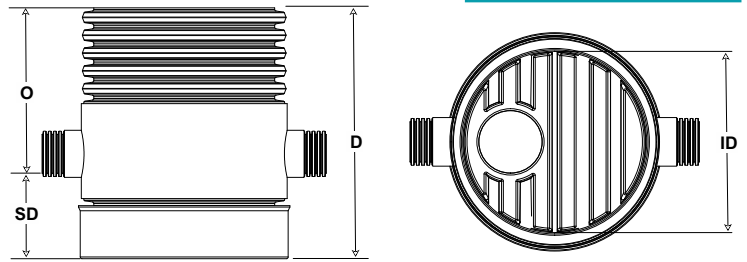
Twinwall Chamber



High Strength- Profiled Rota Moulded Base



making installation **easy..**



Product Code	Chamber Internal ø ID (mm)	Inlet/Outlet Pipework Options (mm)	Sump Depth SD (mm)	Sump Storage Capacity (Litres)	Outlet Invert O (mm)	Overall Depth D (mm)
AICCP1050110/1.5	1041	110	500	430	965	1465
AICCP1050160/1.5	1041	160	500	430	965	1465
AICCP1050150/1.5	1041	150	500	430	965	1465
AICCP1050225/1.5	1041	225	500	430	965	1465
AICCP1050300/1.5	1041	300	500	430	965	1465
AICCP1050450/1.5	1041	450	500	430	965	1465
AICCP1050110/2	1041	110	500	430	1483	1983
AICCP1050160/2	1041	160	500	430	1483	1983
AICCP1050150/2	1041	150	500	430	1483	1983
AICCP1050225/2	1041	225	500	430	1483	1983
AICCP1050300/2	1041	300	500	430	1483	1983
AICCP1050450/2	1041	450	500	430	1483	1983
AICCP1050110/2.5	1041	110	500	430	1995	2495
AICCP1050160/2.5	1041	160	500	430	1995	2495
AICCP1050150/2.5	1041	150	500	430	1995	2495
AICCP1050225/2.5	1041	225	500	430	1995	2495
AICCP1050300/2.5	1041	300	500	430	1995	2495
AICCP1050450/2.5	1041	450	500	430	1995	2495
AICCP1050110/3	1041	110	500	430	2500	3000
AICCP1050160/3	1041	160	500	430	2500	3000
AICCP1050150/3	1041	150	500	430	2500	3000
AICCP1050225/3	1041	225	500	430	2500	3000
AICCP1050300/3	1041	300	500	430	2500	3000
AICCP1050450/3	1041	450	500	430	2500	3000

Optional Items

1050RC	Restriction Cap - Reduces to 350mm
1050SR	Sealing Ring for Restriction Cap

Optional Inlets

The diagram below details the various inlet options.

- Standard outlet will always be at 0° and unless requested the standard inlet will be at 180°.
- Further inlets can be accommodated, dependant on the diameter and position required. The diagram below shows the preferred options if multiple inlets are required in one 90° segment.
- Our team will advise on the suitability once we have the details of your requirement.

