

1 2 3 4 5 6

A

B

C

A

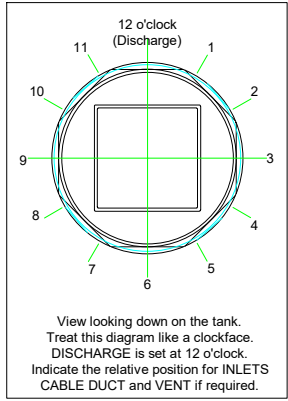
B

C

D

Fabrication Specifications				
ITEM	INDEX	DEPTH (mm)	DIA. (mm)	CLOCKFACE POSITION
Tank depth	A	1500	-	-
Tank Ø	B	-	1200	-
Inlet	C1		110	
Inlet	C2			
Inlet	C3			
Discharge	D		63	
Cable duct			110	
Vent			110	

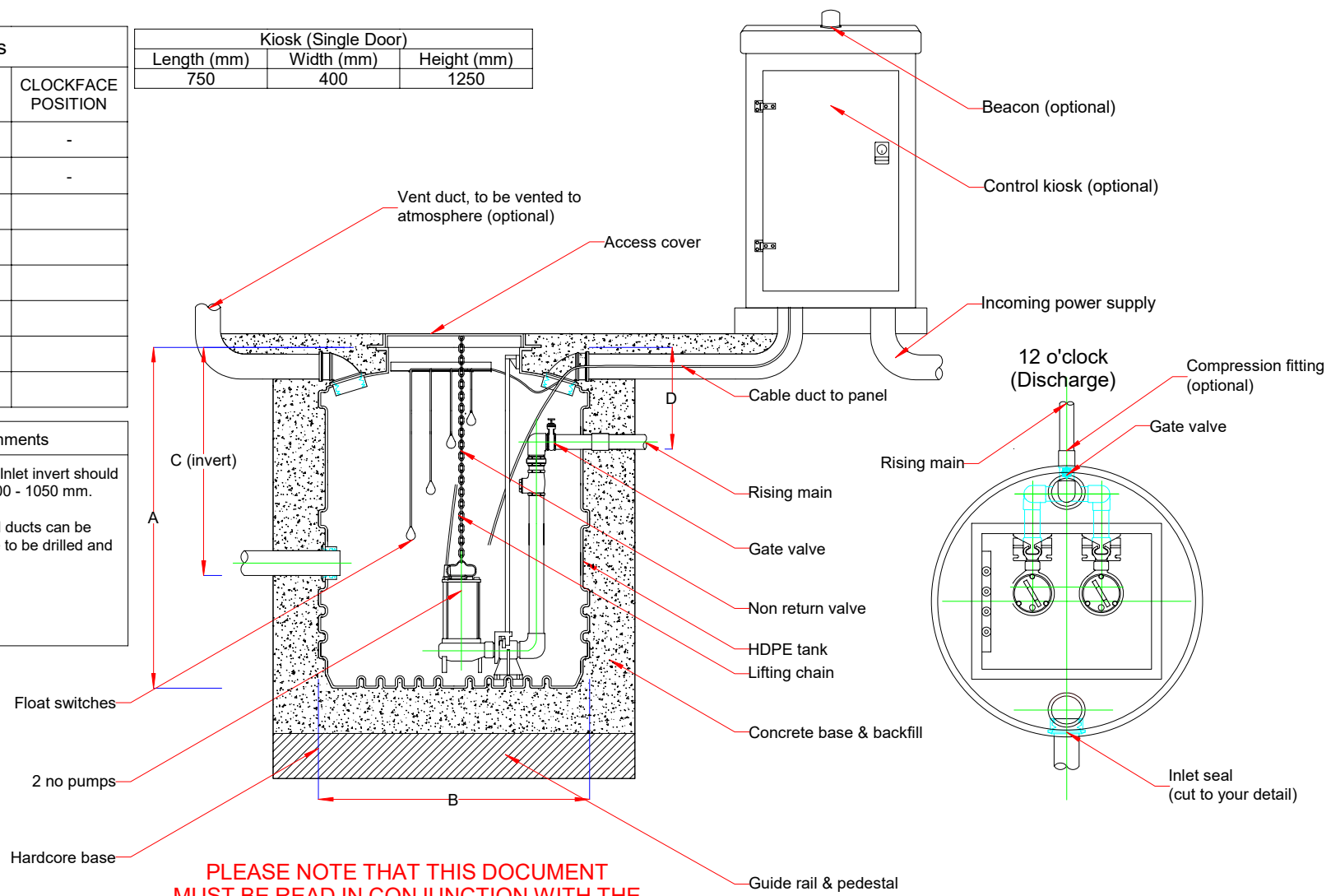
Kiosk (Single Door)		
Length (mm)	Width (mm)	Height (mm)
750	400	1250



Comments

Please Note - Inlet invert should be between 400 - 1050 mm.

Inlet seals and ducts can be supplied loose to be drilled and fitted on site



PLEASE NOTE THAT THIS DOCUMENT MUST BE READ IN CONJUNCTION WITH THE INSTALLATION & OPERATING GUIDELINES

1 2 3 4 5 6

REV	DETAIL	DATE	DRAWN

TITLE

**Twin rigged
Ø1200 x 1500 mm
typical layout**

CUSTOMER

DRAWING NO	DATE	DRAWN
DPT112058	05/12/2018	gf
THIRD ANGLE PROJECTION		SCALE
		NOT TO SCALE
TOLERANCE +/- 2%		SHEET
		1 of 1
REV	0	