

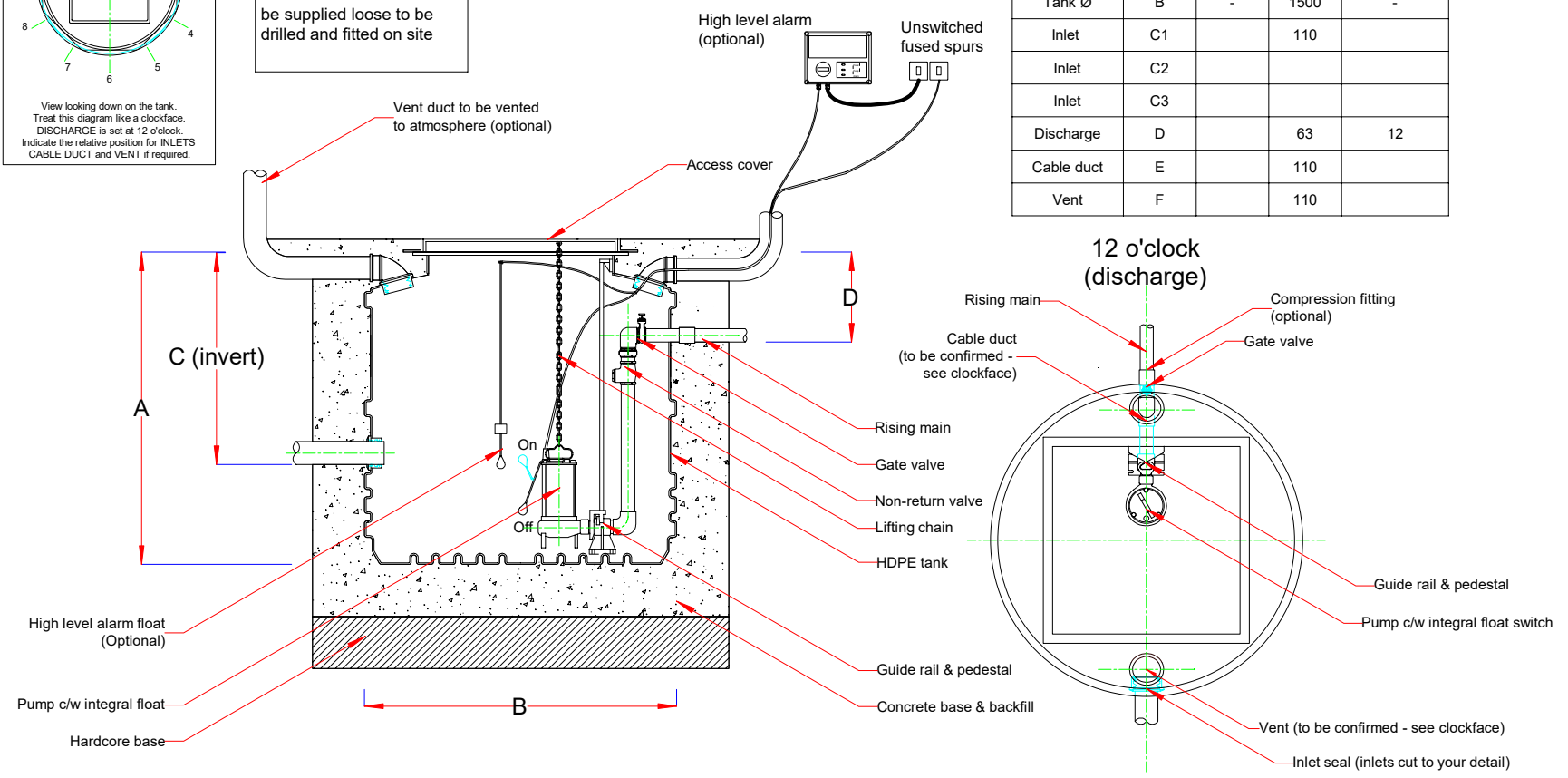
View looking down on the tank.
Treat this diagram like a clockface.
DISCHARGE is set at 12 o'clock.
Indicate the relative position for INLETS
CABLE DUCT and VENT if required.

Comments

Please Note - Inlet invert should be between 400 - 1050 mm.

Inlet seals and ducts can be supplied loose to be drilled and fitted on site

Fabrication Specifications				
ITEM	INDEX	DEPTH (mm)	DIA. (mm)	CLOCKFACE POSITION
Tank depth	A	1500	-	-
Tank Ø	B	-	1500	-
Inlet	C1		110	
Inlet	C2			
Inlet	C3			
Discharge	D		63	12
Cable duct	E		110	
Vent	F		110	



PLEASE NOTE THAT THIS DOCUMENT MUST BE READ IN CONJUNCTION WITH THE INSTALLATION & OPERATING GUIDELINES

REV	DETAIL	DATE	DRAWN	TITLE	DRAWING NO	DATE	DRAWN
				Single rigged Ø1500 x 1500 mm typical layout	DPT112029	12/02/2019	gf
CUSTOMER					THIRD ANGLE PROJECTION		SCALE
							NOT TO SCALE
					TOLERANCE +/- 2%		SHEET
							1 of 1
					REV	0	