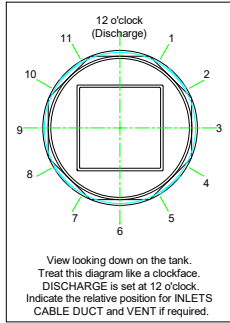


**PLEASE NOTE THAT THIS DOCUMENT MUST BE READ IN CONJUNCTION WITH THE INSTALLATION & OPERATING GUIDELINES**

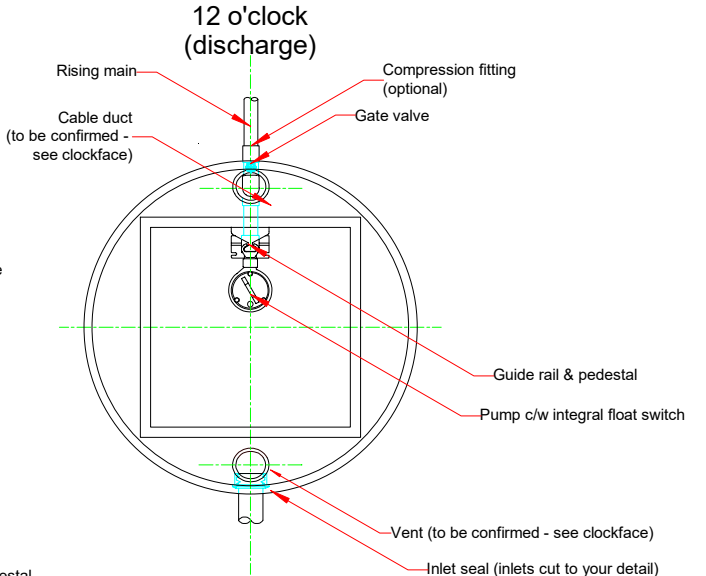
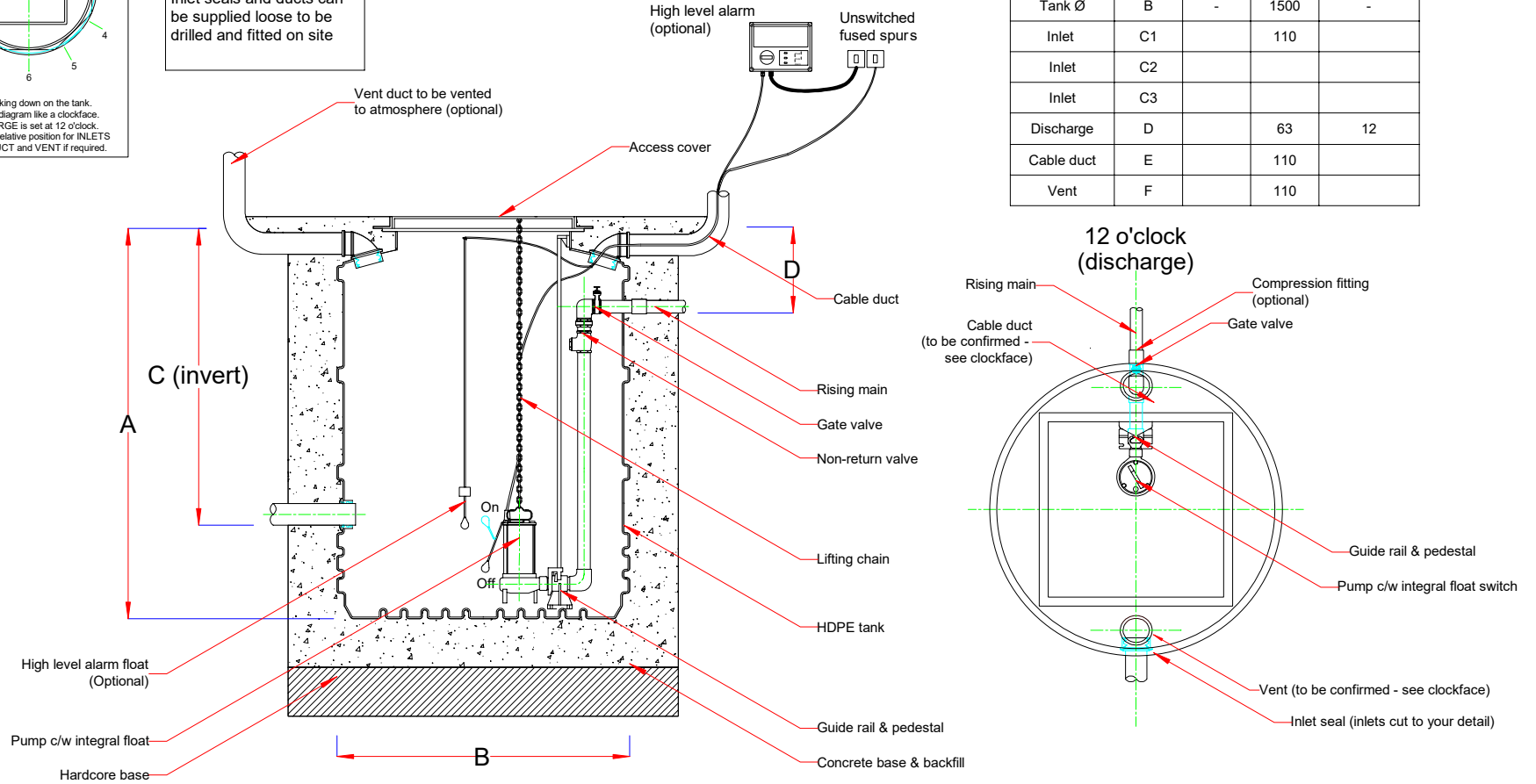


**Comments**

Please Note - Inlet invert should be between 400 - 1515 mm.

Inlet seals and ducts can be supplied loose to be drilled and fitted on site

Fabrication Specifications				
ITEM	INDEX	DEPTH (mm)	DIA. (mm)	CLOCKFACE POSITION
Tank depth	A	2000	-	-
Tank Ø	B	-	1500	-
Inlet	C1		110	
Inlet	C2			
Inlet	C3			
Discharge	D		63	12
Cable duct	E		110	
Vent	F		110	



REV	DETAIL	DATE	DRAWN	TITLE
				Single rigged Ø1500 x 2000 mm typical layout
				CUSTOMER

DRAWING NO	DATE	DRAWN
DPT111029	12/02/2019	gf
THIRD ANGLE PROJECTION		
SCALE		
NOT TO SCALE		
SHEET		
1 of 1		
TOLERANCE +/- 2%		REV 0