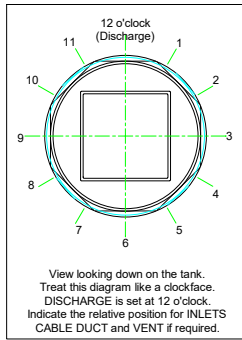


PLEASE NOTE THAT THIS DOCUMENT MUST BE READ IN CONJUNCTION WITH THE INSTALLATION & OPERATING GUIDELINES



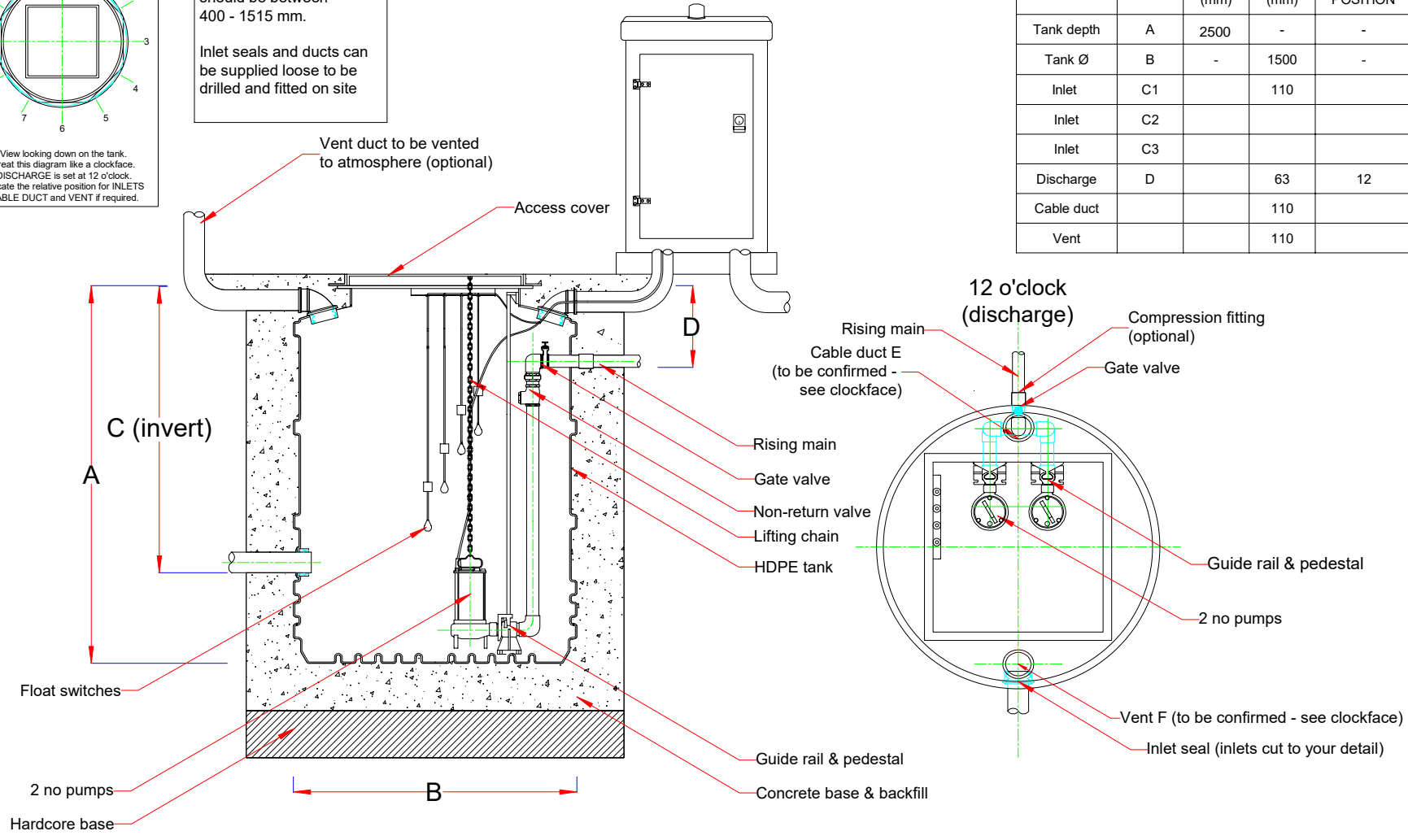
Comments

Please Note - Inlet invert should be between 400 - 1515 mm.

Inlet seals and ducts can be supplied loose to be drilled and fitted on site

Kiosk (Single Door)		
Length (mm)	Width (mm)	Height (mm)
750	400	1250

Fabrication Specifications				
ITEM	INDEX	DEPTH (mm)	DIA. (mm)	CLOCKFACE POSITION
Tank depth	A	2500	-	-
Tank Ø	B	-	1500	-
Inlet	C1		110	
Inlet	C2			
Inlet	C3			
Discharge	D		63	12
Cable duct			110	
Vent			110	



REV	DETAIL	DATE	DRAWN

TITLE
Twin rigged Ø1500 x 2500 mm typical layout

CUSTOMER

DRAWING NO DPT105049	DATE 02/04/2019	DRAWN gf
THIRD ANGLE PROJECTION		SCALE NOT TO SCALE
		SHEET 1 of 1
TOLERANCE +/- 2%		REV 0